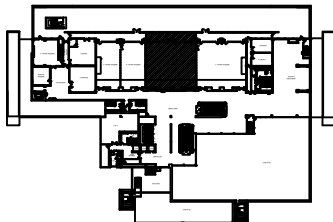


## SUMMIT HALL D

SCALE: 1:140 M



### TECHNICAL SPECIFICATION

|                            |             |
|----------------------------|-------------|
| TOTAL AREA = 18.96 x 17.34 | 328.77 SQ M |
| CEILING HEIGHT             | 6.46 M      |
| MEZZANINE HEIGHT           | 2.40 M      |
| CAPACITY: THEATER          | 382         |
| CLASSROOM                  | 126         |
| BANQUET (ROUND/RECTANGLE)  | 200/240     |
| COCKTAIL                   | 200         |

4TH FLOOR DELEGATION BUILDING

DATE:  
09/10/2012